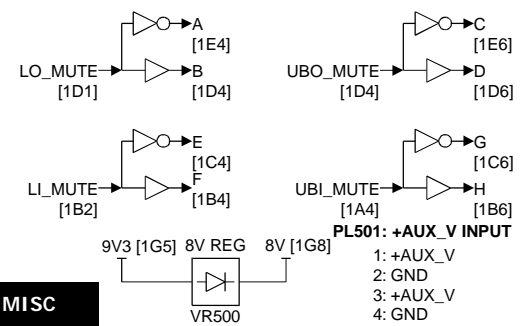


SK500: Reciter Interface	SK501: 25WAY D-Range	PL500: 3rd Party
1: +28V	1: LINE_OUT+	1: 3P_UO
2: GND	2: LINE_OUT-	2: RX_GATE_3P
3: +9V3	3: AUDIO_OUT	3: 3P_TX_KEY
4: GND	4: GND	4: UI_3P
5: +5V	5: AUDIO_IN	5: 3P_UI
6: GND	6: LINE_IN+	6: BO_3P
7: +3V3_STBY	7: LINE_IN-	7: 3P_BO
8: GND	8: RSSI_OUT	8: BI_3P
9: PWR_ON	9: RX_GATE_OUT	9: 3P_BI
10: PWD_RX	10: TX_KEY_IN	10: GND
11: PWD_EX	11: DIG_1_OUT	11: DIG_OUT_3P6
12: GND	12: DIG_2_OUT	12: DIG_OUT_3P7
13: RISC_RS232_TX	13: +AUX_V	13: UO_3P
14: RISC_RS232_RX	14: DIG_1_IN	14: DIG_OUT_3P0
15: TX_KEY_RISC	15: DIG_2_IN	15: DIG_OUT_3P1
16: RX_GATE	16: DIG_3_IN	16: DIG_OUT_3P2
17: COAX_RELAY_DRV	17: DIG_4_IN	17: GND
18: HS_DIG_IN0	18: DIG_5_IN	18: +5V
19: HS_DIG_IN1	19: DIG_6_IN	19: TX_KEY_3P
20: HS_DIG_IN2	20: DIG_7_IN/OPTO+	20: DIG_OUT_3P3
21: SIO_CLK	21: DIG_8_IN/OPTO+	21: DIG_OUT_3P4
22: SIO_TXD	22: DIG_9_IN/RELAY+	22: DIG_OUT_3P5
23: SIO_RXD	23: DIG_10_IN/RELAY+	23: 3P_DIG_IN_0
24: SIO_CON	24: TX_RELAY_DRV	24: NC
25: DSP_RS232_TX	25: GND	
26: DSP_RS232_RX		
27: DSP_IN		
28: DSP_OUT		
29: GND		
30: OUT_LINE+		
31: OUT_LINE-		
32: IN_LINE+		
33: IN_LINE-		
34: IN_AUDIO+		
35: IN_AUDIO-		
36: OUT_AUDIO+		
37: OUT_AUDIO-		
38: RSSI+		
39: RSSI-		
40: LINE_2V4		



CONNECTORS & MISC

TB8000 UHF AGC Schematic Test points

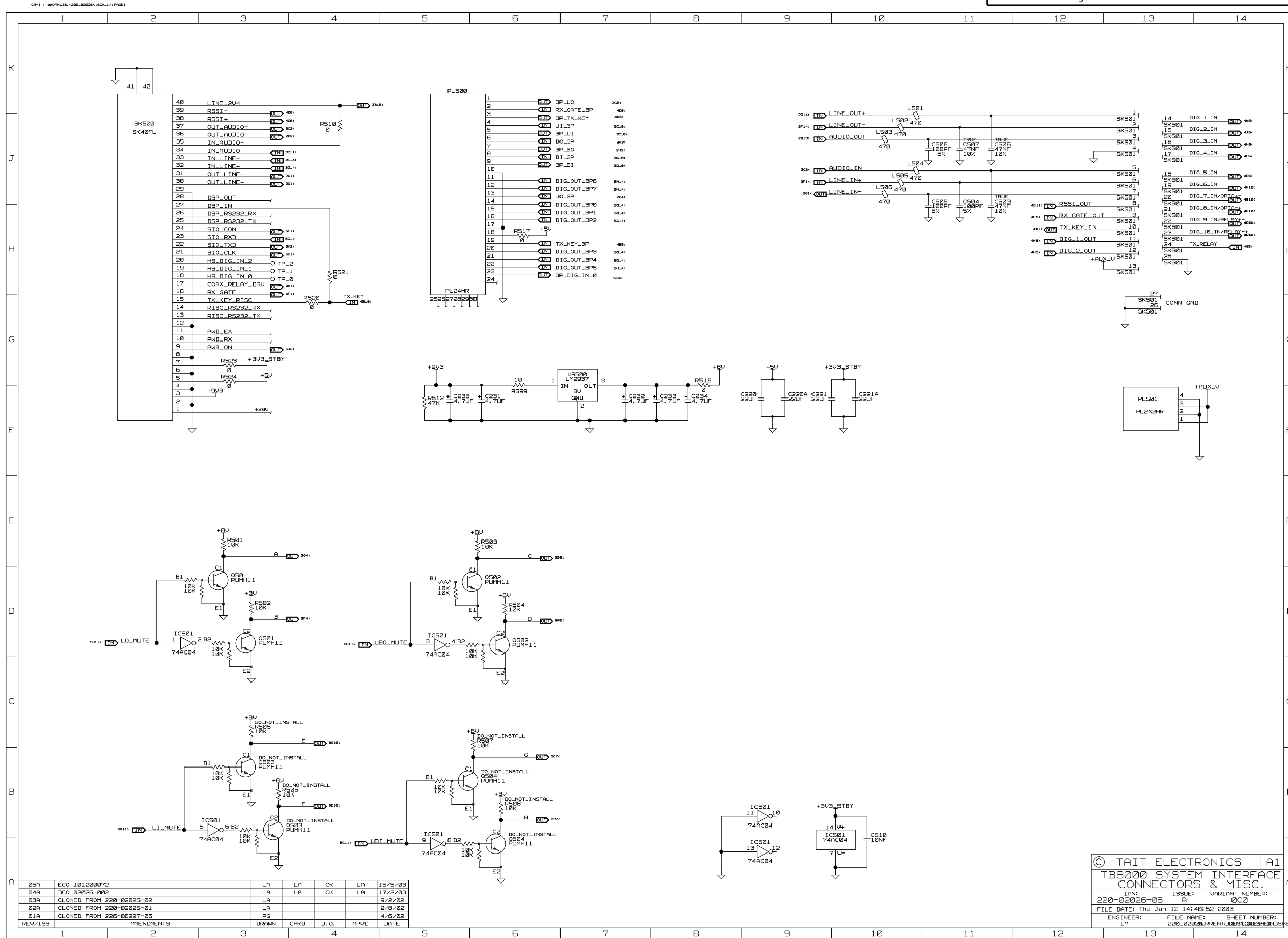
**Schematic PG:8**  
**DIGITAL 0-3V3**  
 RX\_AGC\_CTRL [8R4]

**Supplies**  
 RF\_8V\_MAIN = 8V  
 RF\_8V\_RX\_SW = 8V

**ANALOG**

PIN\_CTRL [8R3]  
 PIN\_BIAS [8R2]

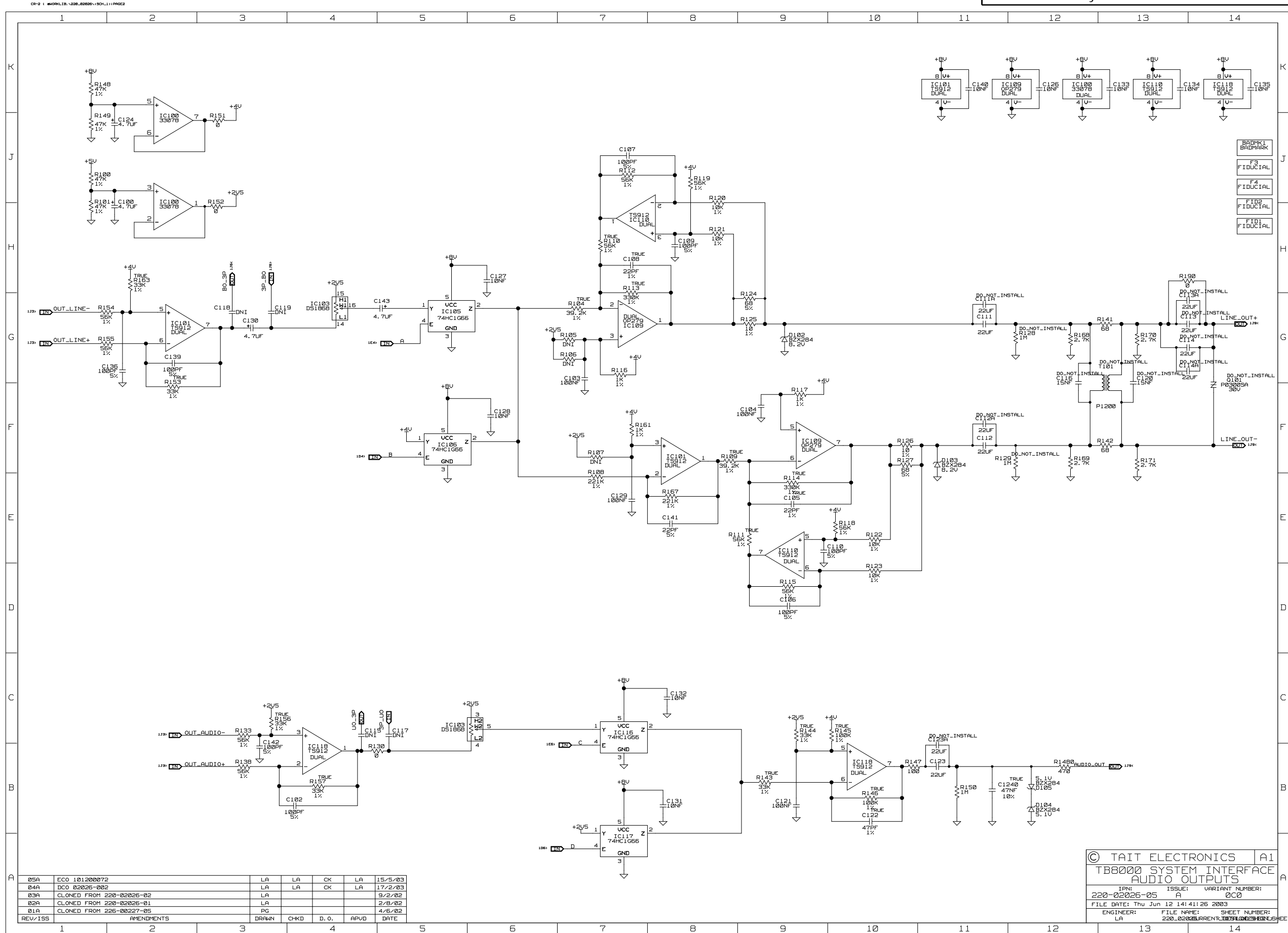
Q800 BIAS  
 IC800:A BIAS  
 IC800:C BIAS



REV/ISS	APPENDMENTS	DRAWN	CHKD	D.O.	APUD	DATE
05A	ECO 101200072	LA	LA	CK	LA	15/5/03
04A	DCO 02026-002	LA	LA	CK	LA	17/2/03
03A	CLONED FROM 220-02026-02	LA	LA		LA	9/2/02
02A	CLONED FROM 220-02026-01	LA	LA		LA	2/8/02
01A	CLONED FROM 225-00227-05	PG			LA	4/6/02

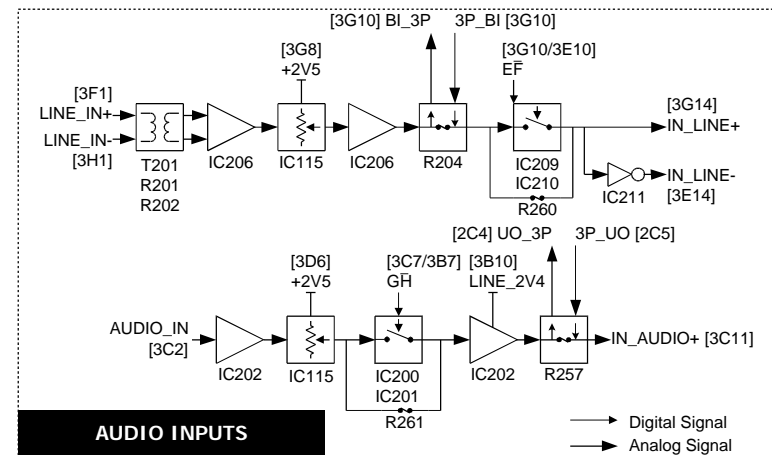
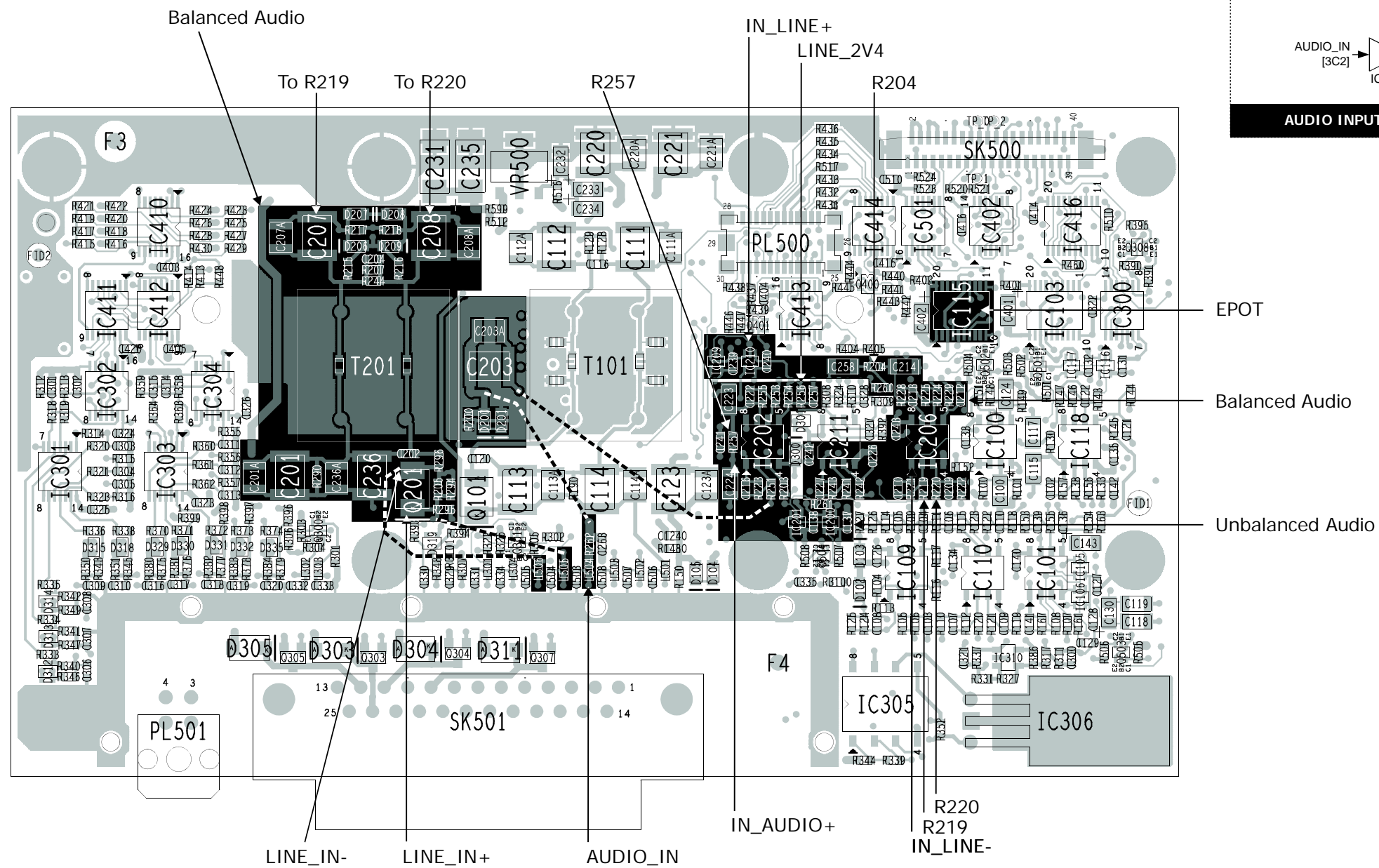
© TAIT ELECTRONICS		A1
TB8000 SYSTEM INTERFACE CONNECTORS & MISC.		
IPN: 220-02026-05	ISSUE: A	VARIANT NUMBER: 0C0
FILE DATE: Thu Jun 12 14:40:52 2003	ENGINEER: LA	FILE NAME: 220_02026_CURRENT_TOPLEVEL_CONNECTORS





REV.	ISS	APPENDMENTS	DRAWN	CHKD	D.O.	APUD	DATE
05A	ECO	101200072	LA	LA	CK	LA	15/5/03
04A	DCO	02026-002	LA	LA	CK	LA	17/2/03
03A		CLONED FROM 220-02026-02	LA	LA			9/2/02
02A		CLONED FROM 220-02026-01	LA	LA			2/8/02
01A		CLONED FROM 225-00227-05	PG				4/6/02

© TAIT ELECTRONICS		A1
TB8000 SYSTEM INTERFACE		
AUDIO OUTPUTS		
IPN:	ISSUE:	VARIANT NUMBER:
220-02026-05	A	000
FILE DATE:	Thu Jun 12 14:41:26 2003	
ENGINEER:	FILE NAME:	SHEET NUMBER:
LA	220_02026_CURRENT_TDFL00039_0003	1



**TB8000 UHF AGC Schematic Test points**

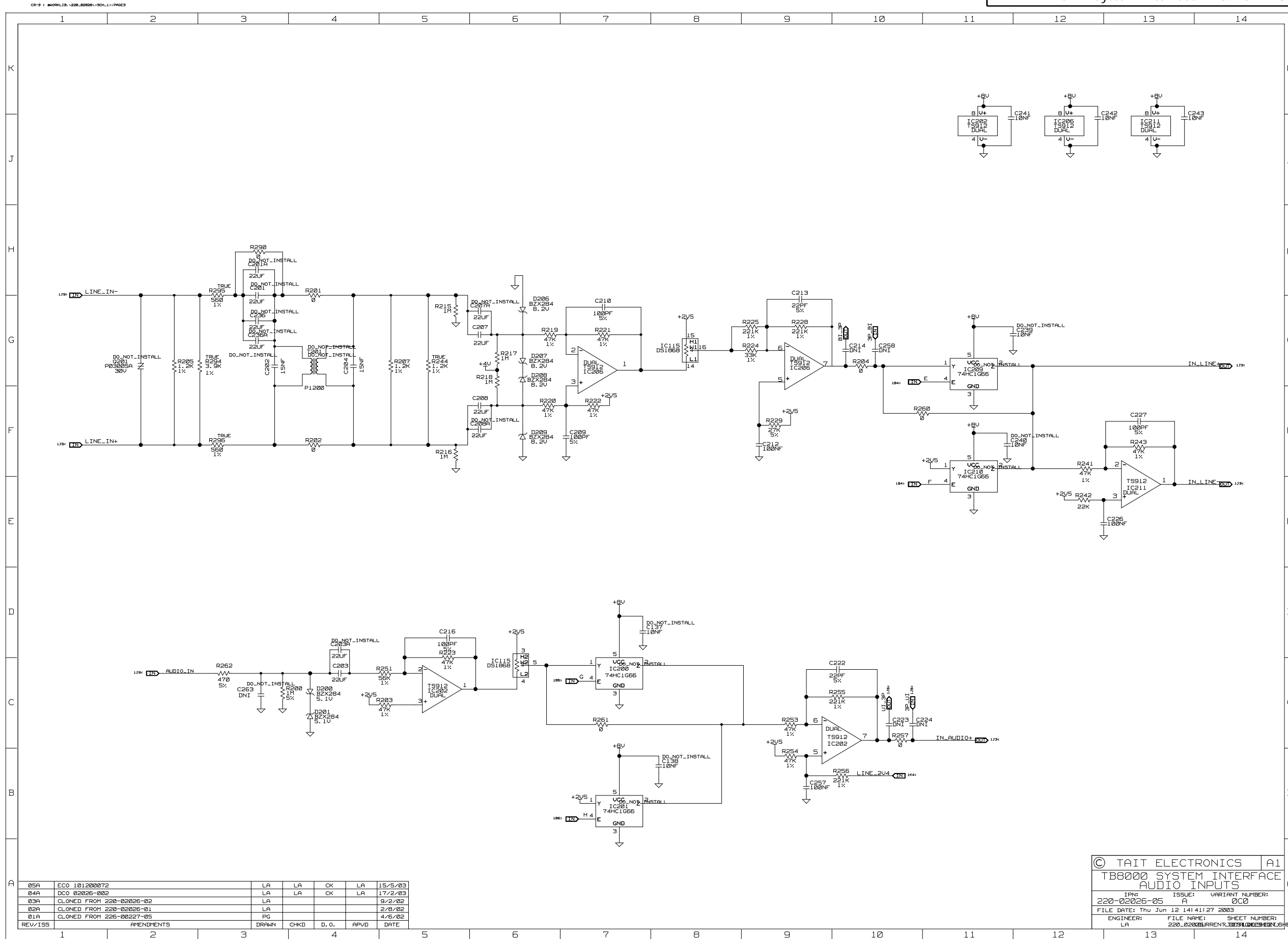
**Schematic PG:8**  
**DIGITAL 0-3V3**  
 RX\_AGC\_CTRL [8R4]

**Supplies**  
 RF\_8V\_MAIN = 8V  
 RF\_8V\_RX\_SW = 8V

**ANALOG**

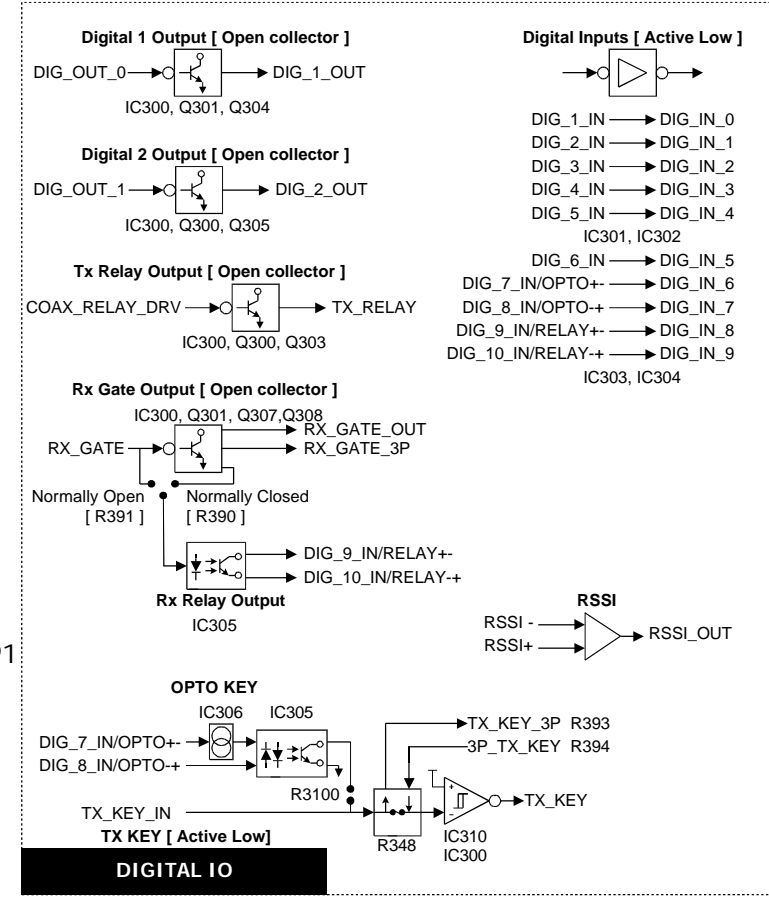
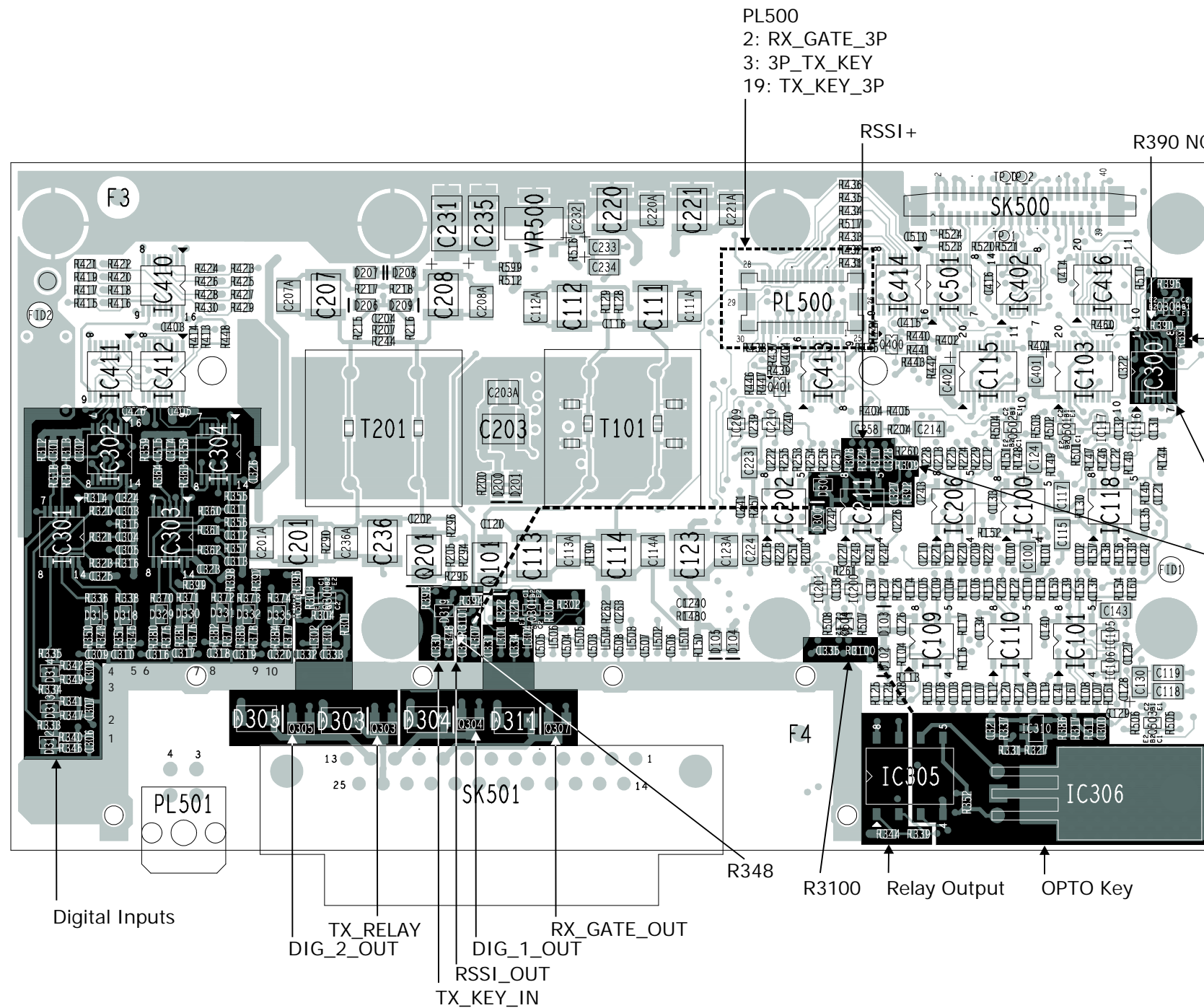
PIN\_CTRL [8R3]  
 PIN\_BIAS [8R2]

Q800 BIAS  
 IC800:A BIAS  
 IC800:C BIAS



05A	ECO 101200072	LA	LA	CK	LA	15/5/03
04A	DCO 02026-002	LA	LA	CK	LA	17/2/03
03A	CLONED FROM 220-02026-02	LA	LA	CK	LA	9/2/02
02A	CLONED FROM 220-02026-01	LA	LA	CK	LA	2/8/02
01A	CLONED FROM 220-02027-05	PG	PG	D.O.	APVD	4/6/02
REV/ISS	APPENDENTS	DRAWN	CHKD	D.O.	APVD	DATE

© TAIT ELECTRONICS A1  
 TB8000 SYSTEM INTERFACE  
 AUDIO INPUTS  
 IPN: 220-02026-05 ISSUE: A VARIANT NUMBER: 000  
 FILE DATE: Thu Jun 12 14:41:27 2003 SHEET NUMBER: 1  
 ENGINEER: LA FILE NAME: 220\_02026\_CURRENT\_TITL00029101101 SHEETS: 1



**TB8000 UHF AGC Schematic Test points**

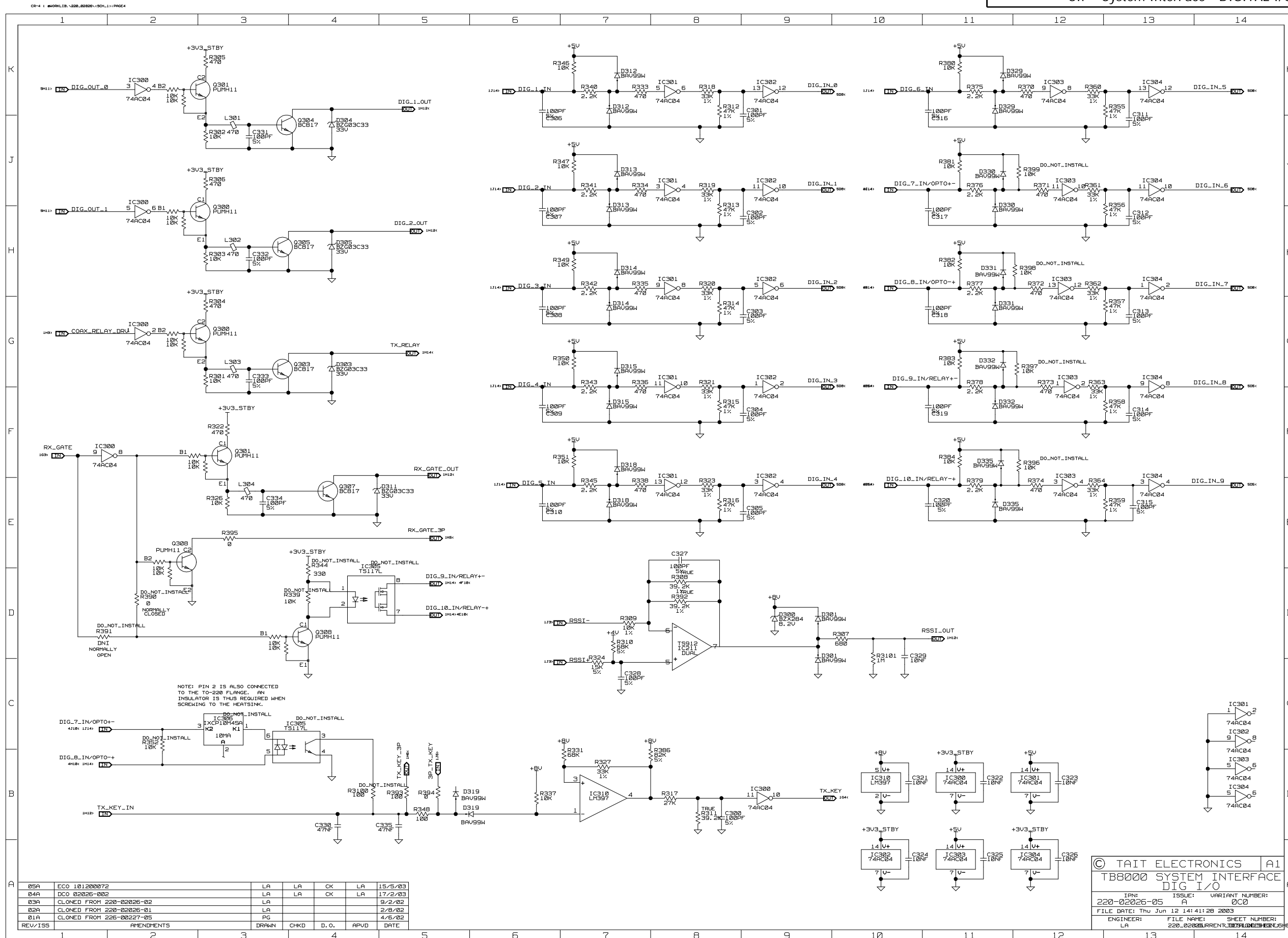
**Schematic PG:8**  
**DIGITAL 0-3V3**  
 RX\_AGC\_CTRL [8R4]

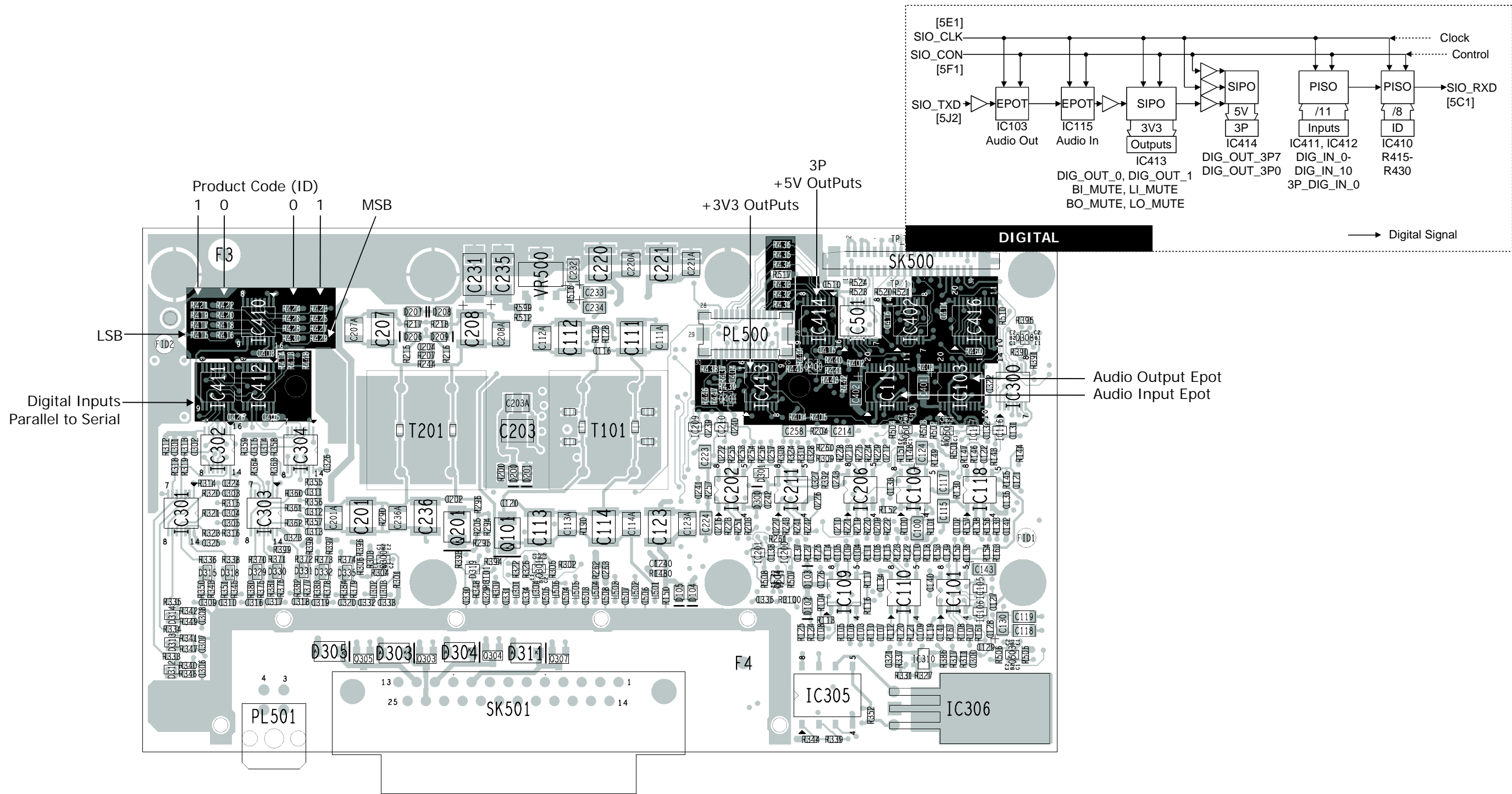
**Supplies**  
 RF\_8V\_MAIN = 8V  
 RF\_8V\_RX\_SW = 8V

**ANALOG**  
 PIN\_CTRL [8R3]  
 PIN\_BIAS [8R2]

Q800 BIAS  
 IC800:A BIAS  
 IC800:C BIAS







**TB8000 UHF AGC Schematic Test points**

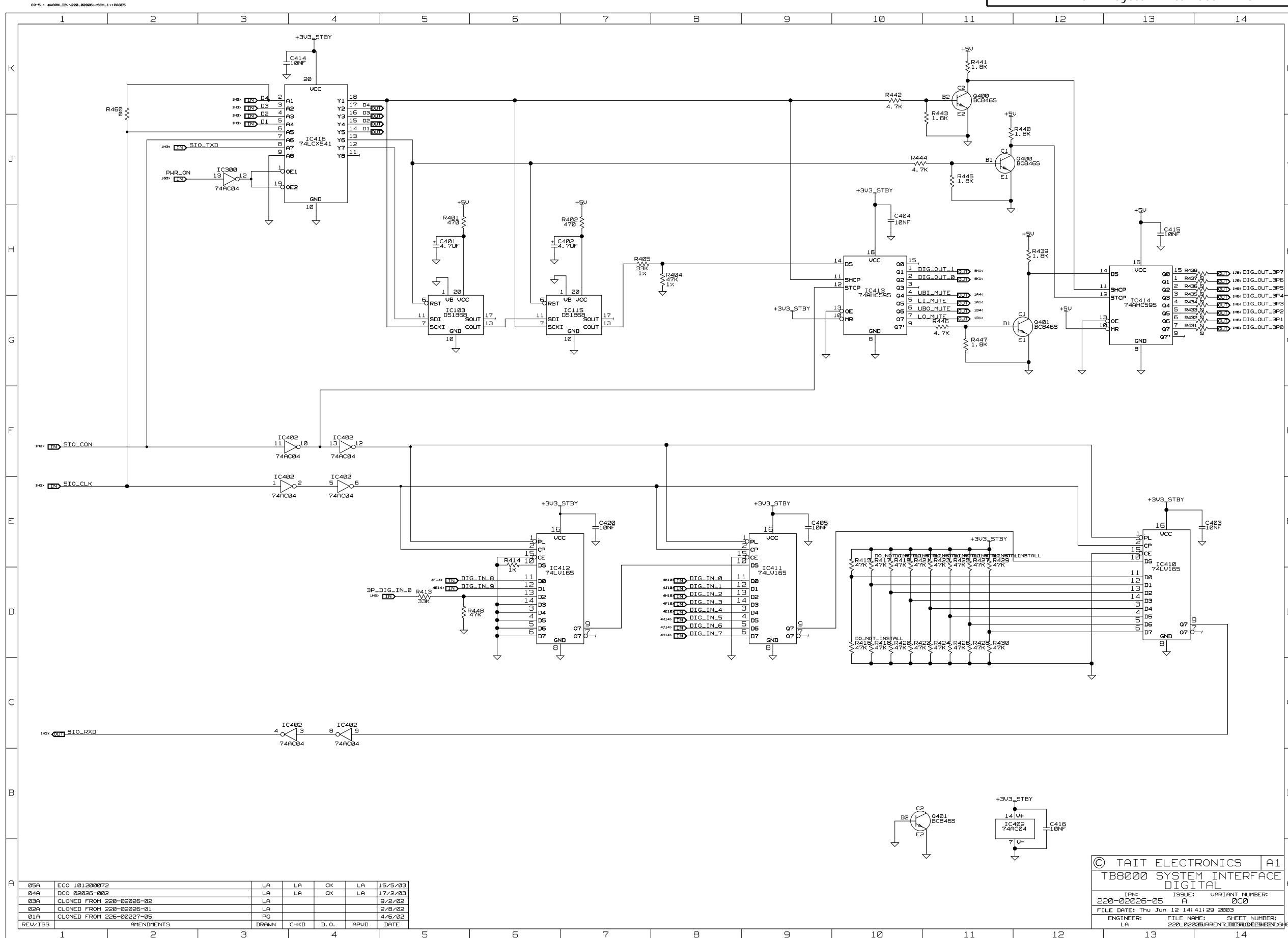
**Schematic PG:8**  
**DIGITAL 0-3V3**  
 RX\_AGC\_CTRL [8R4]

**Supplies**  
 RF\_8V\_MAIN = 8V  
 RF\_8V\_RX\_SW = 8V

**ANALOG**

PIN\_CTRL [8R3]  
 PIN\_BIAS [8R2]

Q800 BIAS  
 IC800:A BIAS  
 IC800:C BIAS



REV/ISS	APPENDMENTS	DRAWN	CHKD	D.O.	APVD	DATE
05A	ECO 101200072	LA	LA	CK	LA	15/5/03
04A	DCO 02026-002	LA	LA	CK	LA	17/2/03
03A	CLONED FROM 220-02026-02	LA	LA	CK	LA	9/2/02
02A	CLONED FROM 220-02026-01	LA	LA	CK	LA	2/8/02
01A	CLONED FROM 226-00227-05	PG	PG	D.O.	APVD	4/6/02

© TAIT ELECTRONICS		A1
TB8000 SYSTEM INTERFACE		
DIGITAL		
IPN:	ISSUE:	VARIANT NUMBER:
220-02026-05	A	000
FILE DATE:	Thu Jun 12 14:41:29 2003	
ENGINEER:	LA	SHEET NUMBER:
		220-02026-CURRENT-100FL00129-1000 SHEETS